



RECP #: 752819

RECORDED 5/8/2019 AT 1:19 PM BK# 2620 PG# 1861  
Debra K. Lee, CLERK OF LARAMIE COUNTY, WY PAGE 1 OF 1

# STATE OF WYOMING CORNER RECORD

(In compliance with the CORNER PERPETUATION AND FILING ACT, Wyoming Statutes, 1997 Section 33-29-140, et. seq., and the Rules and Regulations of the Board of Registrations for Professional Engineers and Professional Land Surveyors)

## SOUTH QUARTER CORNER SECTION 12, T. 18 N., R. 63 W., 6TH P.M., LARAMIE COUNTY, WYOMING

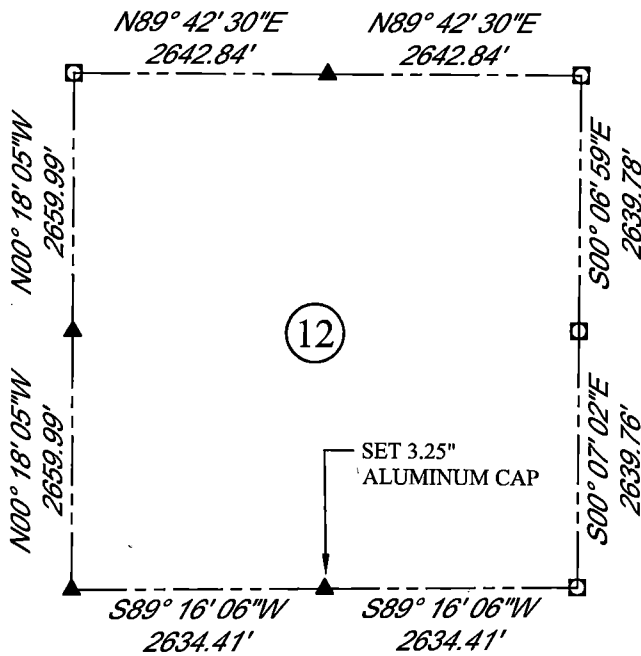
**GLO:** SET A SANDSTONE 14X12X4 10 IN. DEEP. MARKED 1/4 ON N. SIDE.

**FOUND:** SET A 3.25" ALUMINUM CAP, 8" BELOW SURFACE ON SOUTH SIDE OF E - W FENCE LINE, MARKED AS SHOWN. SET (2) MAG NAILS IN FENCE POSTS. 16.5ft NORTHERLY AND 57.0ft NORTHEASTERLY.

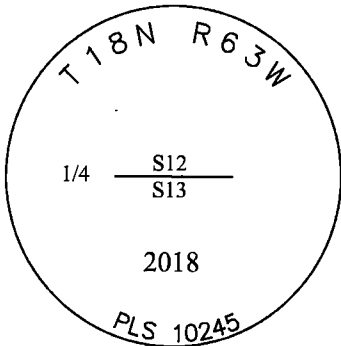


SCALE: NONE

NORTH DETERMINED BY  
G.P.S OBSERVATIONS



SET ALUMINUM CAP. MARKED AS SHOWN.



DATE OF FIELD WORK: 08/29/2018 OFFICE REFERENCE: 746049

### LEGEND:

- FOUND BLM CAP
- FOUND USFS CAP
- FOUND STONE
- FOUND PRIVATE MONUMENT
- ◆ CALCULATED POSITION
- ▲ SET MONUMENT (LS10245)
- SECTION LINE

### CROSS INDEX DIAGRAM

	1	2	3	4	5	6	7	8	9	10	11	12	13	14	15	16	17	18	19	20	21	22	23	24	25
A																									
B																									
C		6																							
D																									
E																									
F																									
G																									
H																									
J																									
K																									
L																									
M																									
N																									
O																									
P																									
Q																									
R																									
S																									
T																									
U																									
V																									
W																									
X																									
Y																									
Z																									
	1	2	3	4	5	6	7	8	9	10	11	12	13	14	15	16	17	18	19	20	21	22	23	24	25

WOOD  
2615 AVIATION DRIVE  
SHERIDAN, WY 82801  
PH: 307-675-6400



THIS CORNER RECORD WAS  
PREPARED BY ME OR UNDER  
MY DIRECTION AND  
SUPERVISION,  
SEAL AND SIGNATURE

